

abbotFox

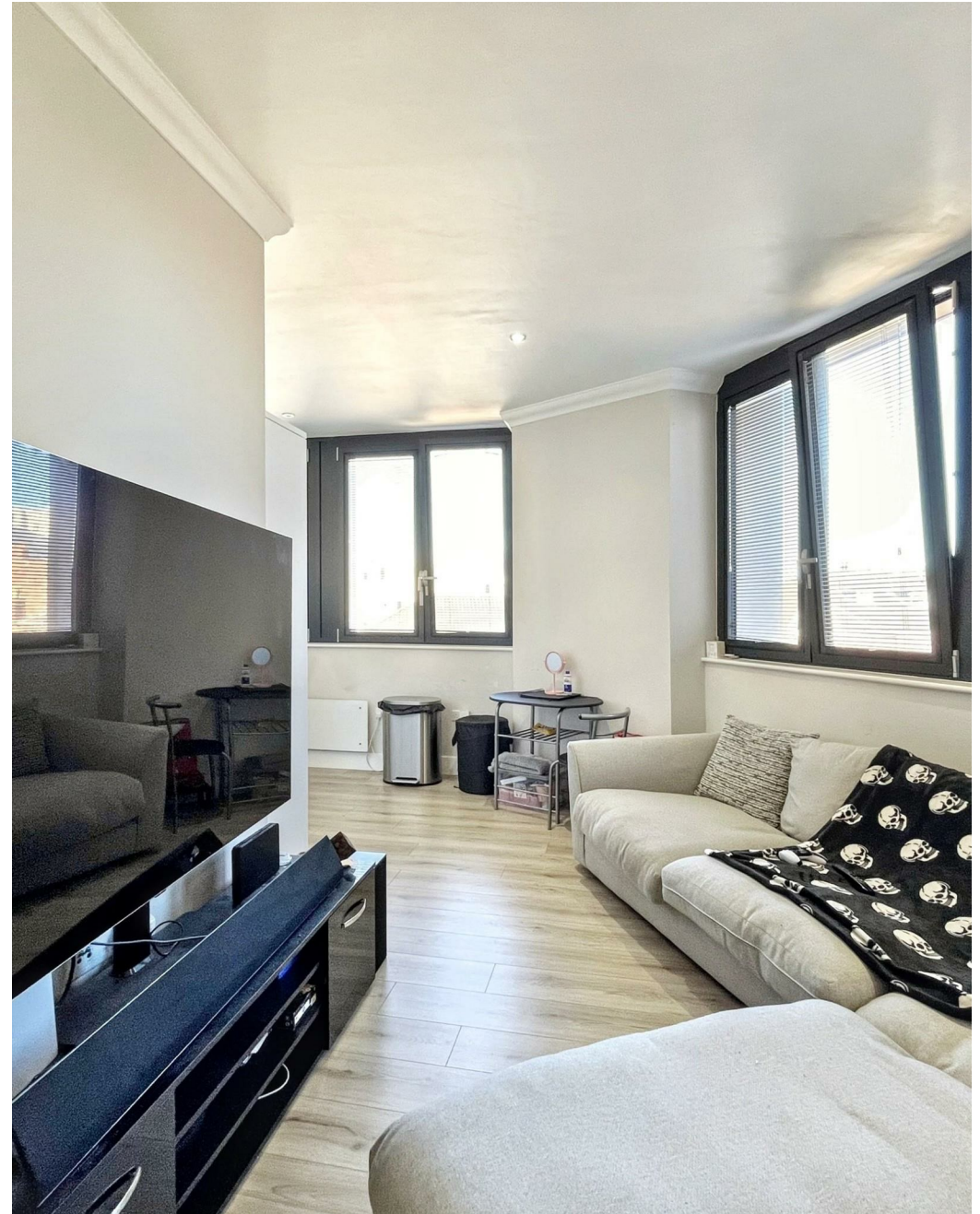


Surrey Street, Norwich  
Guide Price £200,000

“

We are a team of genuine individuals who hold a deep passion for both property and marketing. Collectively, we bring over 70 years of experience in the property market of Norfolk and Suffolk. Our affection for both counties runs deep, and we are enthusiastic about sharing our passion with you.

Colin McKenzie | **Branch Partner**







## THE DETAIL \_\_\_\_\_

abbotFox presents this exceptional two-bedroom apartment, set on an upper floor of the iconic Sentinel House development. Combining modern design, city convenience, and the rare benefit of private parking, this is a home that delivers on both style and substance.

The apartment boasts a spacious, light-filled open-plan living area, complete with a contemporary kitchen, integrated appliances, and ample space to entertain or unwind. Large windows offer far-reaching views across the Norwich skyline, enhancing the sense of space and connection to the city beyond.

The property benefits from two bedrooms and a sleek, fully-tiled shower room adds a touch of boutique luxury, completing the interior with a high-spec finish throughout.

With secure entry, lift access, and allocated parking, this apartment offers a turn-key lifestyle in one of Norwich's most well-regarded developments. Ideally located within walking distance of the city centre, shopping, restaurants, and transport links, this apartment makes an ideal home for professionals, first-time buyers or investors alike.

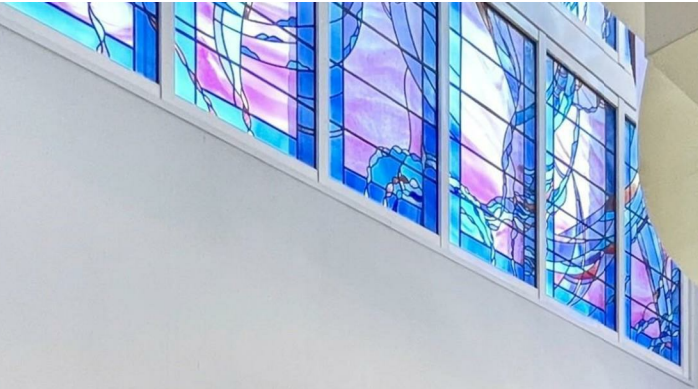
Offered with no onward chain an internal viewing is essential.

Guide Price £200,000 - £210,000





A wall of black mailboxes, arranged in a grid pattern. Each mailbox has a small white label and a keyhole. The wall is mounted on a light-colored base.



A glass entrance with a black frame. Above the doors is a green fire exit sign with a downward arrow. The glass has various signs, including a 'no smoking' sign and a 'no bicycles' sign. A motorcycle is visible outside through the glass.

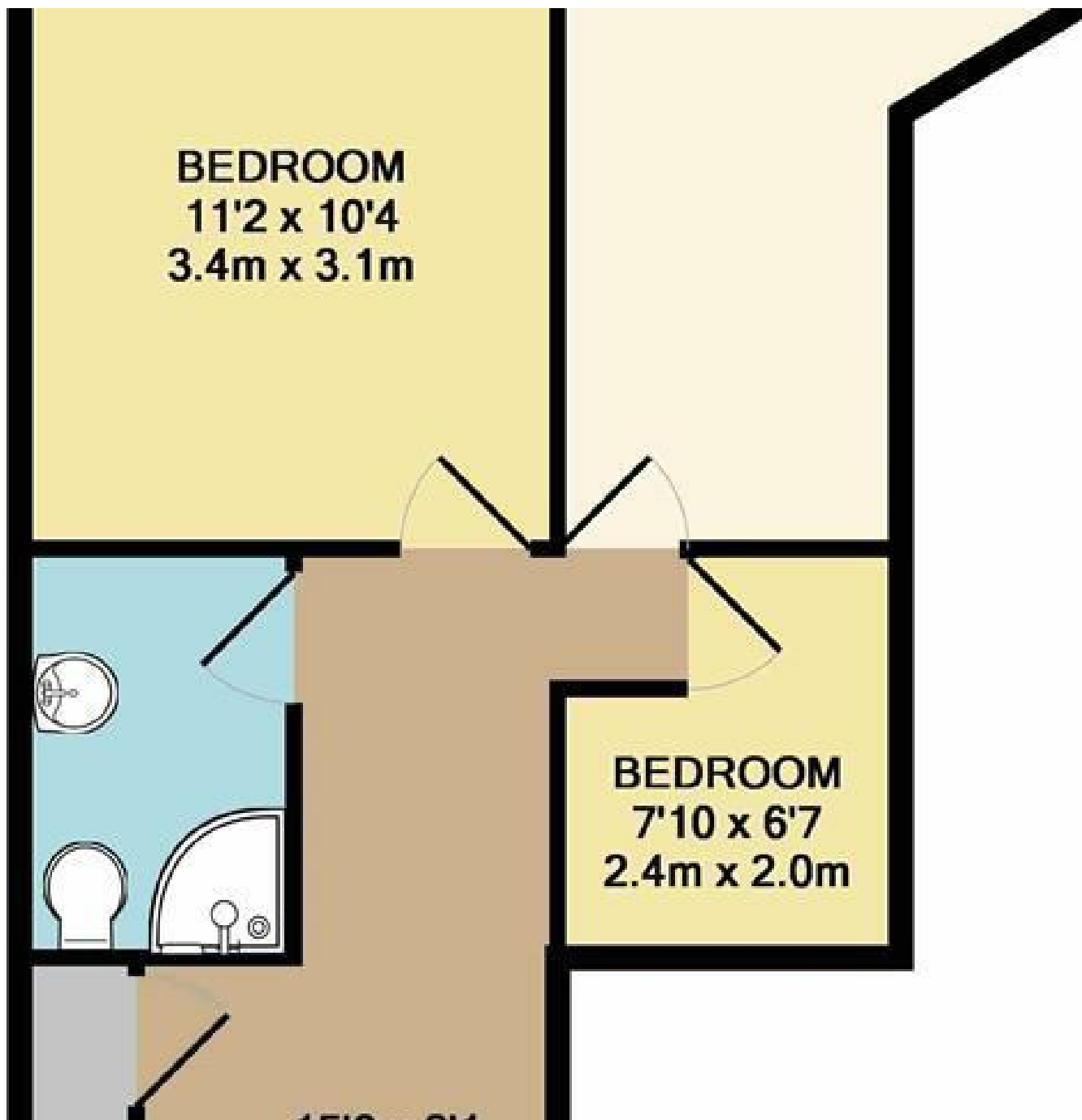
FIRE EXIT

A notice board with several papers pinned to it. The board is white and rectangular.



## THE HIGHLIGHTS \_\_\_\_\_

- Two bedrooms
- Residents' lounge
- Residents' gym
- Second Floor
- City centre location
- Opposite John Lewis
- Norwich's most exciting development
- Concierge service
- Allocated Parking
- Viewing advised



*Let's talk*

01603 660000

[sales@abbotfox.co.uk](mailto:sales@abbotfox.co.uk)

@abbotfox

EPC RATING -

Disclaimer – In accordance with the Property Misdescriptions Act, the company abbotFox gives notice that all descriptions, references to condition, necessary permissions for use and other details are given in good faith and believed to be correct, but any purchaser should not rely on them as statements of fact, and must satisfy themselves by inspection or other means, as to their accuracy.